



HEALTHIER WORKPLACES | A HEALTHIER WORLD

TECHNICAL REVIEW TOWN HALL AIHA CONNECT 2026

August 27, 2025; 2 PM ET

Presented by:

Erin Breece, Program Director, Education

Diana Kane, CAE, Manager, Education

AIHA Connect 2026 Education Submission Review Timeline

June 9 -- Submission portal opened

July 7 – August 26– Call for Technical Reviewers

September 10 -- Submission deadline for:

- Professional Development Courses (PDCs)
- Education Sessions
- Case Studies
- Scientific Research
- Professional Posters

September 15- 29 - Technical review period

September 30-October 14 – CEC & CPC review period

October 15- 21 – CPC and CEC make final selections



Technical Review Process



Each Volunteer Group submits reviewers by **August 26**.



If volunteers are not supplied by Volunteer Groups, each committee's leadership (Chair and Vice Chair) will be expected to assume review responsibilities

Two Phases of Review

- Review of education sessions, is done in two phases:

Phase #1 – Technical Reviewers

- Serve as the subject matter experts
- Ensure submissions are scientifically sound, innovative, and relevant to the profession

Phase #2 – CPC & CEC

- Review submissions after technical review period
- CPC and CEC have access to feedback from the technical reviewers

**Final program decisions are made by CPC and CEC
with the technical reviews factored into the review process**

WHAT'S NEW FOR 2026?

- Categorizing by Core Competencies (rather than topics)
- Peer Review Group Selection
- Targeted Audience Tagging



New for 2026 – Core Competencies

Submitters will now choose **Core Competencies** instead of primary & secondary topics

- Administrative Controls
- Chemical Sampling and Instrumental Analysis
- Biological Hazards
- Biostatistics and Epidemiology
- Career Development Pathways
- Chemical Hazards
- Community Exposure
- Engineering Controls and Ventilation
- Ergonomics
- Exposure Assessment
- Fatigue Management
- Functional Core Competencies
- Hazard Communication
- Health Regulations
- IH/OH Program Management
- Indoor Air Quality
- Laboratory Quality Assurance/Quality Management
- Noise and Hearing Loss Prevention
- Personal Protective Equipment
- Psychosocial hazards
- Radiation (Ionizing and Nonionizing)
- Risk Assessment
- Risk Communication
- Risk Management
- Safety
- Thermal Stressors
- *Total Worker Health*®
- Toxicology / Human Disease
- Work Environments, Occupations, and Industrial Processes

NEW for 2026: Peer Review Group Selection

Based on the selected primary competency, submitters will select one group that is best suited to serve as a subject matter expert for peer review for their submissions

- Academic Advisory Group
- Aerosol Technology Committee
- Biological Monitoring Committee
- Biosafety and Environmental Microbiology
- Cannabis Industry H&S Committee
- Career and Employment Services Committee
- Confined Spaces Committee
- Construction Committee
- Content Portfolio AG (CPAG)
 - Big Data, A.I., & Sensor Technologies
 - Enhancing OEHS Communication Skills
 - Changing Work Dynamics
- Defining the Science Advisory Group
- Dermal and Surface Sampling Working Group
- Digital and AI Transformations Exchange (D.A.T.E.) Working Group
- Ergonomics Committee
- Exposure and Control Banding Committee
- Exposure Assessment Strategies Committee
- Healthcare Working Group
- Human Capitals Advisory Group
- Improving Exposure Judgement Advisory Group
- Incident Preparedness and Response Working Group
- Indoor Air Quality Task Force
- Indoor Environment Quality
- International Affairs Committee

NEW for 2026: Peer Review Group Selection

Based on the selected primary competency, submitters will select one group that is best suited to serve as a subject matter expert for peer review for their submissions

- Joint Industrial Hygiene Ethics Education Committee
- Laboratory Health & Safety Committee
- Leadership & Management Committee
- Mining Working Group
- Minority SIG
- Museum and Cultural Heritage Industry Working Group
- Nano and Advanced Material Working Group
- Noise Committee
- Occupational and Environmental Epidemiology Committee
- Oil and Gas Working Group
- Opioid Working Group
- PR(IH)DE SIG
- Principles of Good Practice (PGP)
- Protective Clothing & Equipment Committee
- Radiation Committee
- Real Time Detection Systems Committee
- Respiratory Protection
- Risk Committee
- Safety Committee
- Sampling and Laboratory Analysis Committee
- Social Concerns Committee
- Stewardship & Sustainability Committee
- Thermal Stress Working Group
- Total Worker Health (TWH) Advisory Group
- Toxicology Committee
- TSCA Task Force
- Women in IH

Targeted Audience Tagging (IH/OH Practice Level)

Submitters are asked to assign a targeted audience aligning with one of the three basic levels of practice in IH/OH:

- **Technician:** person trained to assist professionals and practitioners with task-specific assignments; may collect air samples, operate direct-reading instruments, and provide other services based on specific training received and instructions received from professionals and practitioners.
- **Practitioner:** person in various occupational fields trained to assist professionals but not themselves licensed or certified at a professional level by a certification body; performs tasks requiring significant knowledge and skill in the IH/OH field; may function independently of a professional IH/OH but may not be involved in the breadth of IH/OH practice nor have the level of responsibility of a professional IH/OH certified by examination.
- **Professional:** person who has obtained a baccalaureate or graduate degree in IH/OH, public health, safety, environmental sciences, biology, chemistry, physics, or engineering or who has a degree in another area that meets the standards set forth in the Knowledge and Skill Sets of IH/OH Practice Levels and has had 4 or more years of practice.

Content Level

Submitters will choose a content level for their submission:

- **Introductory:** Introduces an elementary or basic subject area. Participant expected to have 0-2 years of experience in industrial hygiene or OEHS, or a technical career path.

Prerequisite: general knowledge

- **Intermediate:** Specific topics within a subject. Participant would have 2-10 years of experience in industrial hygiene or OEHS and a good understanding of the subject area; but not of the specific topic presented.

Prerequisites: another course, skill, or working knowledge of the general subject.

- **Advanced:** Specific topic within a subject in great detail. May cover current issues, involve complex calculations, analysis and synthesis, or evaluations/assessments of real-life scenarios. Participant must have 10+ years of experience in industrial hygiene or OEHS.

Prerequisites: working knowledge of the specific topic before the course

Technical Review Process

Review process is blind; no submitter information is shared during first review phase

Proposals are assigned based on submitter's VG/AG/SIG selection

Typically, each technical reviewer has 5-15 proposals to review

The time commitment, per proposal, is approximately 15-20 minutes

All reviews are completed online in our submissions system



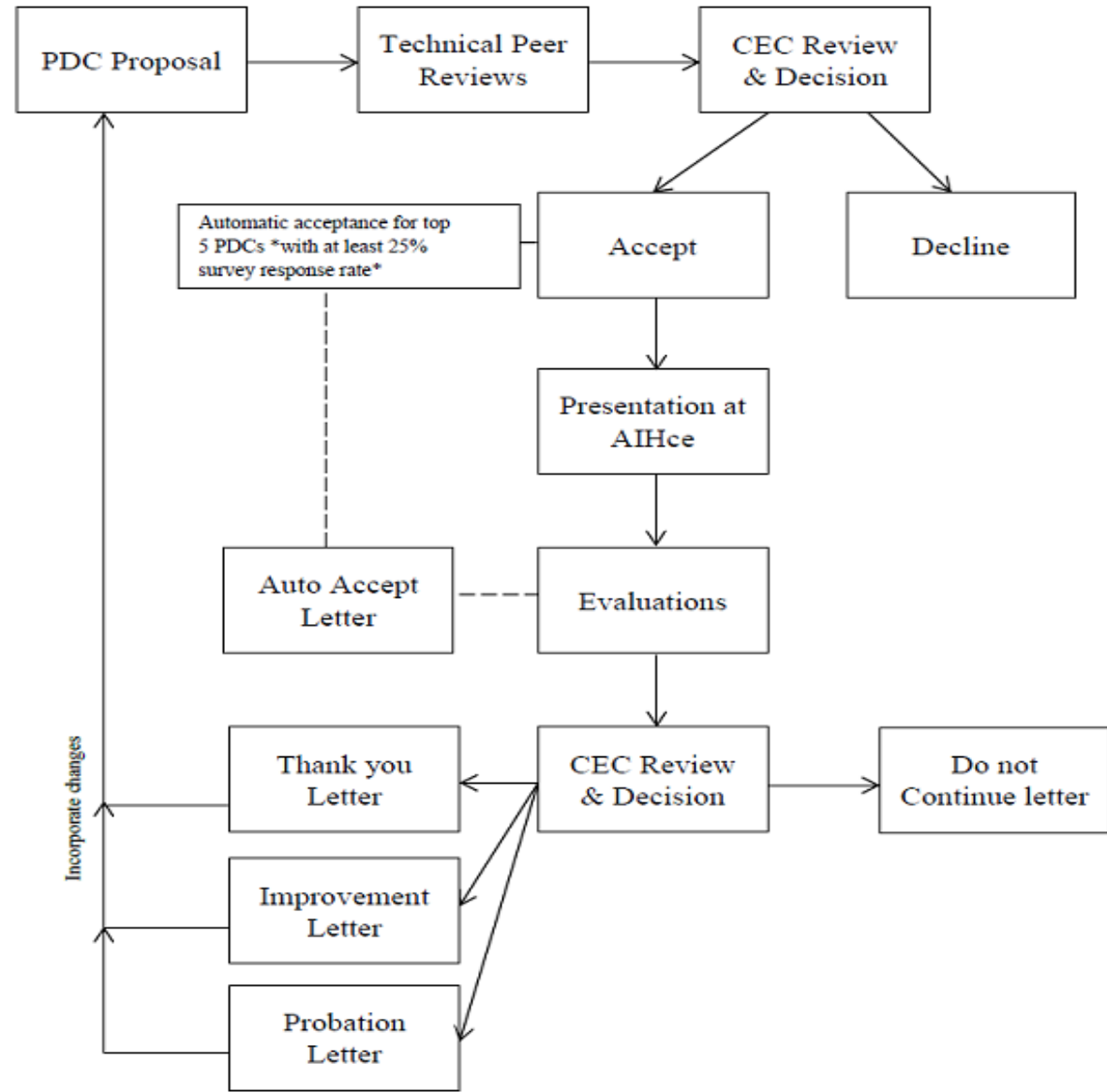
**Conference & Expo for
OEHS Professionals**

June 1-3
New Orleans, LA

Professional Development Courses (PDCs)

- Virtual Only
 - Thursday and Friday: May 28 - 29
- In-Person Only
 - Saturday, Sunday, and Thursday: May 30, 31, June 4
- Half-day, one-day, and two-day formats
- Final selections made by Continuing Education Committee (CEC)

PDC REVIEW & SELECTION PROCESS FLOW CHART



How Are PDCs Scored?

- Competency: Are the selected core competencies selected designated appropriately?
- Topic Interest: Is the topic: New/Emerging, Core/Foundational, Waning
- Technical Basis: Does the proposal have a sound technical basis? *(Rating 1-5)*
- Is the course description clear and concise? *(Rating 1-5)*
- Are the learning outcomes appropriate for the course level? *(Rating 1-5)* (introductory, intermediate, advanced)
- Does the outline describe the content appropriate for selected course level? *(Rating 1-5)* (introductory, intermediate, advanced)

How Are PDCs Scored?

- Learning Outcomes & Course Outline describes the content appropriate for selected target audience. *(Yes/No)* The proposal is listed as either: technician, practitioner, professional
- Specialized Track Opportunities: Do the submitter's responses for inclusion or exclusion of the specialized track selections appear to be correct based on the description of the course?
- Business Case/IH Value Statement: Does the statement provided match the proposed course description?
- Recommendation: (Suggest that the CEC *ACCEPT* or *REJECT* the proposal)
- Comments: (Open text box)



How does the CEC review PDCs?



Each proposal is evaluated by at least two members of the CEC to assure it is relevant to the profession, titled properly, and meets its stated objectives. Course outline and teaching methods are critiqued, and presenter biographies are reviewed.










The CEC then considers all proposals and their ratings regarding core competency balance, educational needs expressed by member surveys, and the AIHA's strategic goals.



For courses previously conducted, the major factor in the review are the student evaluations from previous years.

How are PDCs selected?

-  Wide range of core competencies aligned to the IH/OH Core competencies
-  20% introductory, 50% intermediate, and 30% advanced | 20% technician, 50% practitioner, 30, professional
-  60% full day, 35% half day, 5% two day
-  At least one PDC addressing each of the CPAG content priorities
-  At least 40% new courses each year
-  Top 5 courses from the previous year (based on ratings and attendance) are automatically accepted
-  Final selections are limited by the number of rooms available at the conference center

Why Would the Committee *not* Accept a PDC Proposal?

Many more proposals are submitted than can be accommodated at AIHA Connect. There are several reasons for not selecting a particular course.

Examples include:

- relevance to the members
- accuracy of technical information presented
- previous student evaluations
- overabundance of course offerings in one area
- content is similar to another course
- need for course rotation
- simply lack of interest by the members at large



**Conference & Expo for
OEHS Professionals**

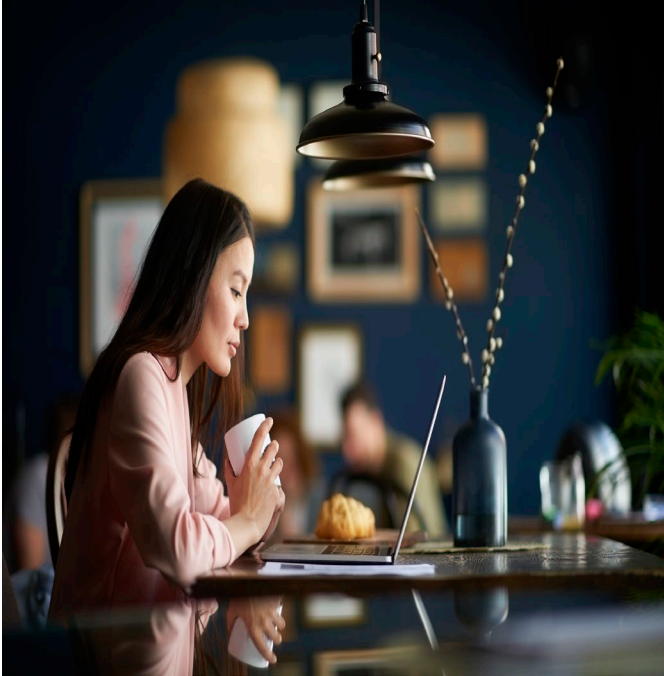
June 1-3
New Orleans, LA

AIHA Connect 2026 Education Sessions

Monday, Tuesday, and Wednesday; June 1-3, 2026

- Education Sessions (1 hour)
- Scientific Research Presentations (30 min)
- Case Studies (30 min)
- Professional Posters

EDUCATION SESSION PROPOSALS REVIEW & SELECTION PROCESS



1. Submission of education session proposals.
2. Initial evaluation by technical reviewers for content quality.
3. Review by Conference Program Committee for final selection.
4. Sessions scheduled on Monday, Tuesday, Wednesday
5. Notifications sent to presenters late October

SELECTION PROCESS

Considerations used to inform the selection process:

1. Input given by technical reviewers
2. Evaluation scores from previous conferences
3. Data from AIHA research and surveys indicating popular topics
4. Spread of core competencies

**Proposals not selected may be considered for Pop-Ups, future webinars, Synergist articles*

HOW ARE EDUCATION PROPOSALS SCORED?

- Are the selected core competencies selected designated appropriately? *(Yes/No)*
- This presentation will be of interest to the AIHA Connect audience *(Rating 1-5)*
- The content of this session is current and relevant to OEHS professionals *(Rating 1-5)*
- This proposal is clear, well-organized, and well-written. It is important that the session is easy to read and understandable to attendees *(Rating 1-3)*



HOW ARE EDUCATION PROPOSALS SCORED?

- Is the abstract content level designated appropriately (introductory, intermediate, advanced)? *(Yes/No)*
- Is the abstract audience level designated appropriately (technician, practitioner, professional)? *(Yes/No)*
- The session does not contain a sales pitch and does not promote a specific vendor or service. *(Yes/No)*
- This presentation should be accepted for AIHA Connect *(Yes/No)*
- Open-ended Comments

Special Sessions: Research Roundups

Two individual case study or scientific research presentations (30 minutes each) comprise a single one-hour session

Sessions are arranged based on core competencies

Volunteer Groups are expected to provide moderators for Research Roundups in their topic area

Multiple Part Sessions

Submitters may submit two proposals with the same title; identified as Part 1 and Part 2

Each part may have a maximum of 3 speakers
(maximum session total of 6 speakers)

Each part should have different content and presenters

Each part should be able to stand as an individual session

You might not review both parts; depends on selected core competency

CPC may decide to accept only one part

AIHA Education Needs Assessment Findings

- Align education with demand
- Identify how education helps OEHS/IHs in terms of work and career
- Levels of education should be considered
- Experiment with new engagement approaches

AIHA Content Priorities



Big Data, AI & Sensor Technologies



Enhancing OEHS Communication Skills



Changing Work Dynamics



Total Worker Health ®

Gap analysis: Key Areas of Focus

In-depth
content in
specialty area

Practical
education

New
perspectives

Cutting-edge
research

Engaging
sessions

Attendees want more....



Variety of topics in OEHS/Industrial Hygiene



Practical, technical sessions; related to everyday work



Engaging sessions



State-of-the-art content to keep IHs current



Challenging content, going deeper than introductory level



Cutting edge research



Technical content

Proof of Participation

- Per BGC, serving as a technical reviewer qualifies as a pro-bono activity, (.5 points for each 40 hours)
- AIHA will issue you a letter of participation in late October and list the number of reviews you completed for proof for BGC

What's next:

1. The recording and slides for today's webinar will be posted on the AIHA Connect page under "Get Involved" by this time tomorrow
2. You will receive a detailed email on September 15, 2025
 - How to log in and access reviews assigned to you
 - Step by step instructions on how to input your reviews
3. Mark time on your personal calendar **between September 15 - 29** to review proposals
4. **All** technical reviewing must be done **no later than midnight ET on September 29**; this is a hard deadline because the CPC and CEC begin their reviews immediately after



**Conference & Expo for
OEHS Professionals**

June 1-3
New Orleans, LA

**Thank you
for
all you do!**

For AIHA Connect weekday education:
(education sessions, case studies,
scientific presentations, professional posters)

Diana Kane, Manager, Education

dkane@aiha.org

For PDCs:

Erin Breece, Program Director, Education

ebreece@aiha.org